

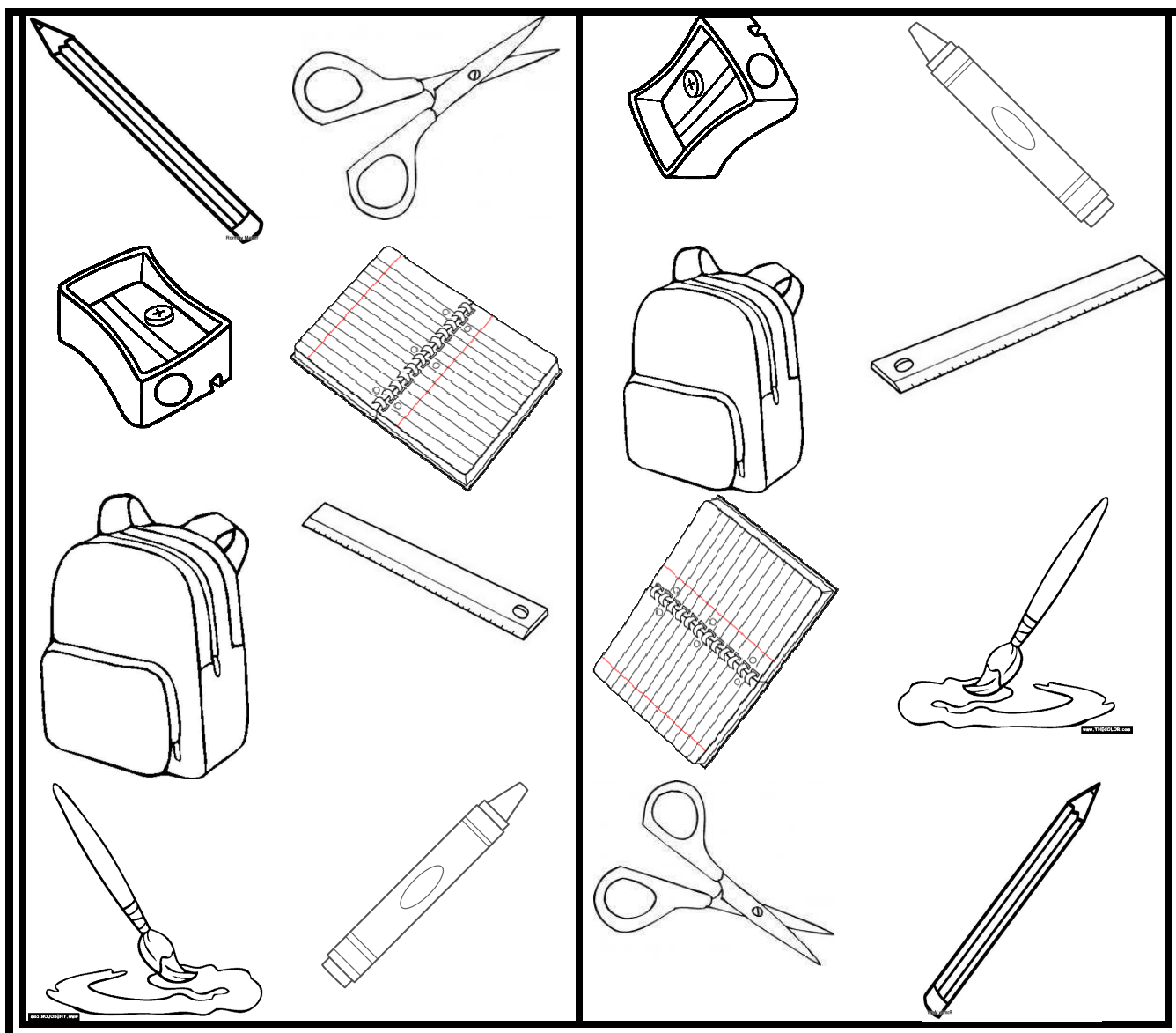
Ġ1.1.2

Noħolqu modi kif nistgħu naslu f'destinazzjonijiet differenti fil-klassi u fl-iskola tagħna

Lesti l-kuluri aħmar, orangjo, isfar, aħdar, blu, vjola, roża u kannella.
Imbagħad pingi skont kif tghidlek l-għalliema.

xellug

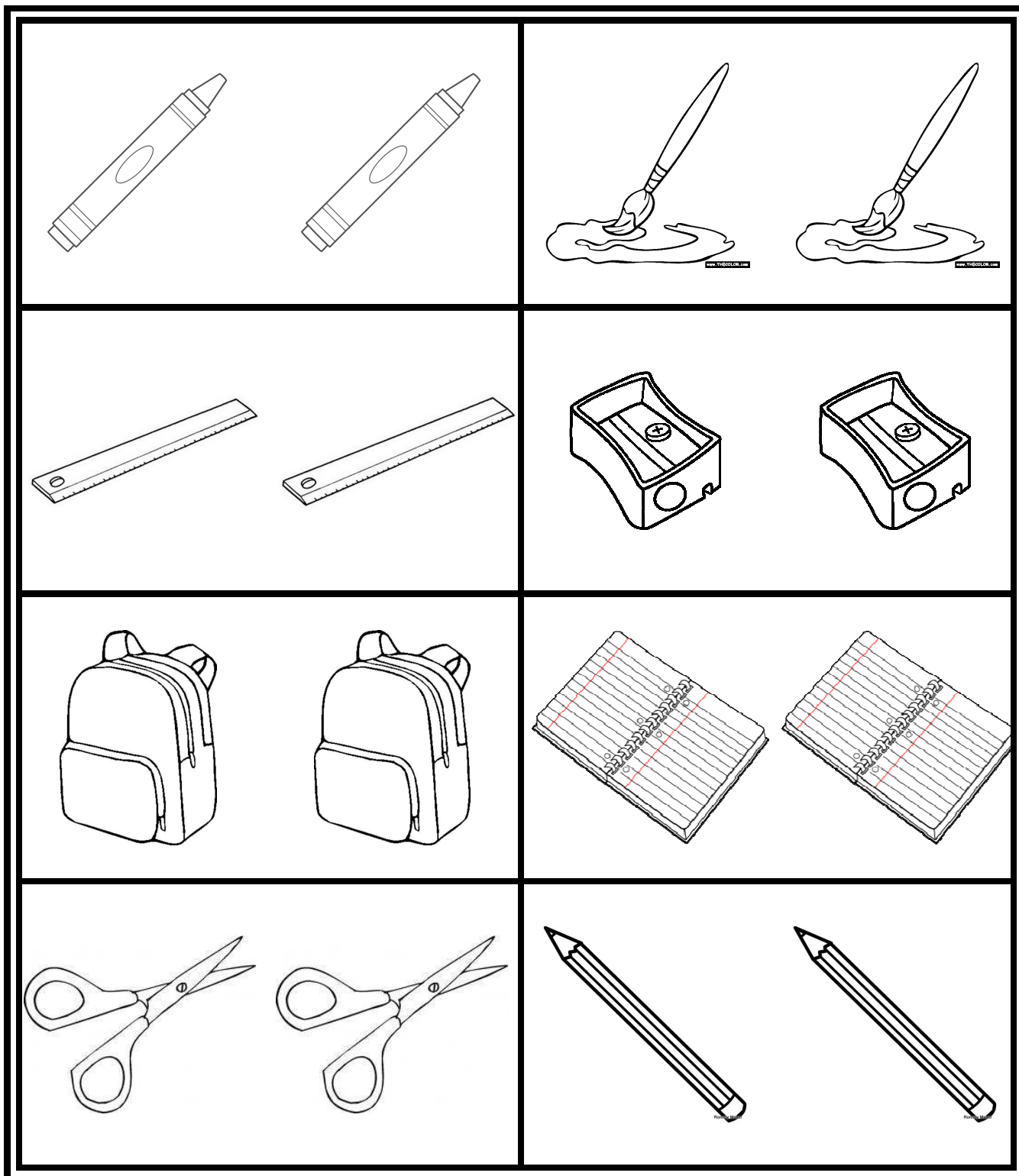
lemin







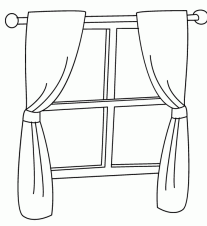
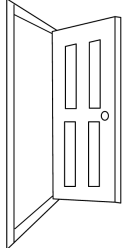
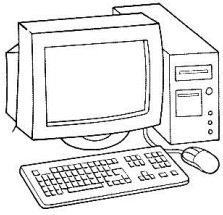
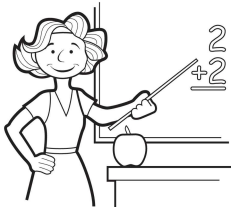
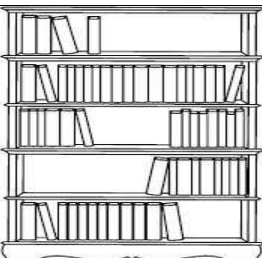
Gwida għall-ghalliema.

- Għid lit-tfal biex ilestu l-kuluri aħmar, orangjo, isfar, aħdar, blu, vjola, roża u kannella.
- Meta kulhadd ikun lesta l-kuluri, aġti dawn l-istruzzjonijiet wiehed wiehed.
 1. Pingi l-lapes tax-xellug aħmar.
 2. Pingi l-imqass tal-lemin vjola.
 3. Pingi l-pinzell tal-lemin blu.
 4. Pingi l-kulur tax-xellug roża.
 5. Pingi t-temprina tax-xellug aħdar.
 6. Pingi l-pitazz tal-lemin aħmar.
 7. Pingi r-riga tal-lemin orangjo.
 8. Pingi l-pitazz tax-xellug vjola.
 9. Pingi l-basket tal-lemin blu.
 10. Pingi r-riga tax-xellug kannella.
 11. Pingi t-temprina tal-lemin safra.
 12. Pingi l-basket tax-xellug roża.
 13. Pingi l-kulur tal-lemin orangjo.
 14. Pingi l-pinzell tax-xellug kannella.
 15. Pingi l-imqass tax-xellug isfar.
 16. Pingi l-lapes tal-lemin aħdar.

Pingi l-affarijiet tax-xellug b'aħdar u tal-lemin bl-orangjo.



Aghmel ċirku mal-kelma t-tajba skont fejn issibhom fil-klassi

	fuq ix-xellug	fuq il-lemin	warajja	quddiemi
				
	fuq ix-xellug	fuq il-lemin	warajja	quddiemi
	fuq ix-xellug	fuq il-lemin	warajja	quddiemi
	fuq ix-xellug	fuq il-lemin	warajja	quddiemi
	fuq ix-xellug	fuq il-lemin	warajja	quddiemi
	fuq ix-xellug	fuq il-lemin	warajja	quddiemi