

Worksheet S6.3.2

Let us explore the places in Malta which were hit the most during the war?

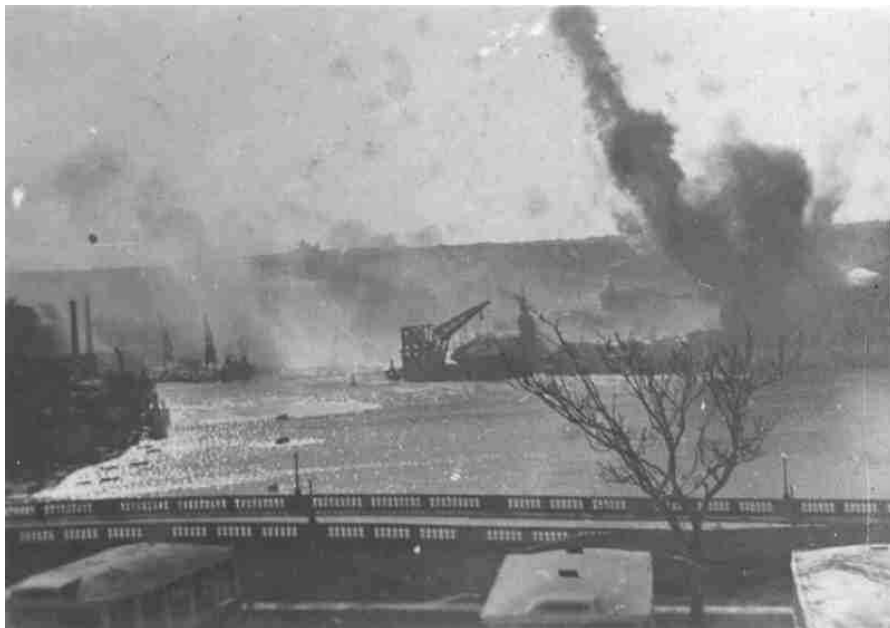
THE MISFORTUNE OF BEING A TARGET (*historical drama – second part*)

Francesca: Where did they attack, grandpa?

Grandpa: They threw the most bombs in the area around the Grand Harbour. Due to the shipyard, Valletta, Floriana and Cottonera were hit a lot. The enemies tried to destroy the warships that were in the shipyard for repairs or that were entering or leaving the port. They also attacked the airport in order to destroy the runway, so that the British would not have a place from where to send their airplanes in the air. Since the main runway was close to Luqa, the nearby villages were in constant danger. There were other runways in Hal Far and Ta' Qali but these were far from villages.

Charlene: I would have been so afraid! If I lived near the Grand Harbour or the airport, I would have left the village and go live somewhere far from the danger, even Gozo.

Grandpa: Well said, Charlene. Many people did so. Until May 1941, after about a year since the start of the war, there were around 55,000 persons living away from their homes. Those who did not leave ended up practically living in shelters. It is estimated that around the Grand Harbour there were 18,000 people persons who regularly slept in the shelters of Valletta, Floriana and Cottonera. This was a good thing; otherwise many more people would have died. In only April of 1942, 11,450 buildings got damaged.



Answer these questions.

1. Why were the Grand Harbour and the airport a constant target for the enemies?

(a)

(b)

2. Mention five cities or villages around the Grand Harbour that were greatly damaged during the Second World War.

3. Why did many people living near the Grand Harbour left their homes? And where do you think they went to live?

4. What do you think grandpa wanted to mean when he said that there were people who “ended up practically living in shelters”?

5. Mention three cities or villages (that are not close to the Grand Harbour) which were also badly hit during the Second World War.
